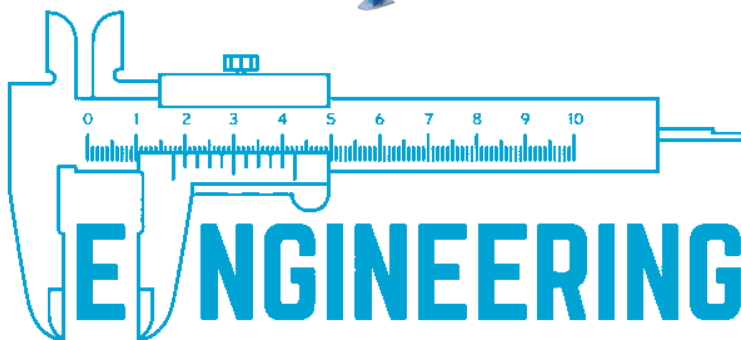




A Complete Solution for Food Packaging



SS Metal Products
World of Possibilities

SS Metal Products - Specializes in Aluminium Foil Container and foil products. Our expertise in design, manufacture, fabrication, assembly and spares for all kind of industries.

RAW MATERIAL

We ensure standarized raw material quality for your replacement items either at the first time or at any time and helps to achieve consistency In your processing

QUALITY CONTROL

We have special quality control team with long time experience in same field, our quality control team use latest measuring instruments to carry our processing consistently and almost effortlessly.

DESIGN AND DEVELOPMENT

Our design engineers work with latest computer system and software's to prepare complete designs for your requirements with only few basic dimension required from your end . So, if you don't have any design - just relax, our team will do it for you. Even if you need some design modifications or developments, our rich experience is at your disposal. And honestly, we enjoy innovation very much.

MANUFACTURING FACILITIES

We have full flanged and latest machinery plant and machinery with fully CNC systems ranging from small to big capacities. This includes machining, grinding and polishing operations under one roof.

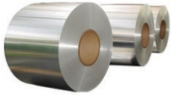
ADVANTAGES OF ALUMINIUM FOIL

Foil Container have an attractive appearance, safe to use with most foods, convenient for disposal. Foil Containers are used for preservation of foods. Storage economy and easy to transport. Full re cyclability and resource saving.

FOOD SERVICE MARKET

- Fast food operation
- Restaurants
- Caterers
- Canteens (Commercial and semi commercial feeding)
- Schools & Colleges
- Public Transportation (Air lines and railways etc).

ALUMINIUM FOIL MATERIAL



1. Proportion of small, low cost.
2. High conductivity.
3. Access to good thermal conductivity, heat radiation capability.
4. Good air tightness.
5. High intensity
6. Better corrosion resistance In day-to-day environment.
7. Good cold deformability.
8. Can not be magnetized;
9. After rolled, the aluminum foil have two beautiful silver-white surfaces, one side has a high optical reflectivity, the other side is different, has a soft matte finish. Because the aluminum foil have above excellent performance and the continuous improvement of the producing technology. it has been widely applied to the drinks industry, flexible packaging Golden card packaging, electromagnetic, construction and other fields.

Product Name	Specification		Alloy Type	Temper	Inner core Dia (mm)	Reel Outer Dia (mm)	Purpose
	Thickness (micron)	Width (mm)					
Aluminium Foil for Semi - rigid Container	32-46	200-1260	3003-8001	H22-H24	75-150	400-800	Used as aluminium container
Household Foil	9 -25	100-600	1235 -8011	O-H22	75-150	280-750	Used as family food packing and keep fresh

Full Automatic aluminium foil container production line

Product Description

The whole production line includes : Feeding machine, press machine, receiving table, scrap collector.

Production line operating environment requirements

- Power supply : AC three - phase five line with the zero line and the ground wire
- The three - phase voltage 380 V (or 220V)
- The single - phase voltage : 220V
- Frequency range : 50 / 60Hz
- Temperature : 50°C Following
- Pressure : Consumption of = 1m³ / min 0.6 - 1 MPa

Foil Feeder

- Auto-Hydraulic feeding faction
- Obturators spindle and faeding by air operated
- Double magnetic powder tension control system to make the tension control more Smooth
- Punching oil auto-recirculating system.is good for series of alu-foil container's production.and save gas closed fuel tank layout resonable
- Using high wear-resisting of silicon roller.so that the machine can work long life
- Complete machine linkage.adopt touchscreen and PLC computer control accuracy higher
- Portable type command control system.so that operation is much easier and more convenience
- Simplified style tracking system,good for production



	Single Cavity	Double Cavity
Max raw material weight:	200 kg	500 kg
Max raw material diameter :	800 mm	1000 mm
Max feeding Width:	300 mm/450mm	450mm/600
Feeding speed:	20-60m/min	20-60m/min
Length range:	30-999 mm	30-999 mm
Accurancy of feeding:	±0.3 mm	±0.3 mm
Machine power:	2 kw	3 kw
Net weight:	400 kg	700 kg
Size: (LWH)	2000 x 1500 x 1000	2200 x 1700 x 1100

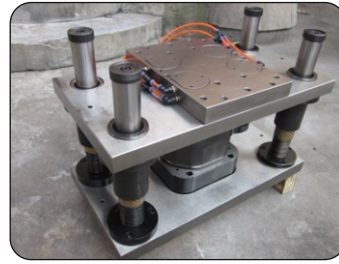
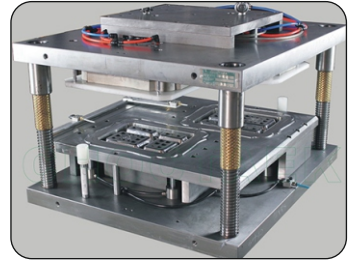
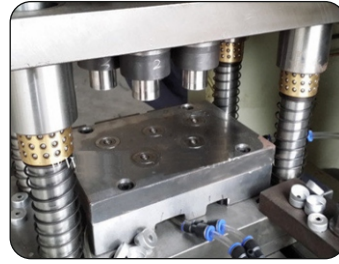
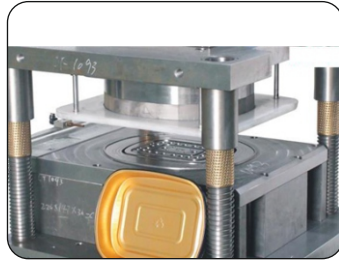


PRESS MACHINE FEATURES

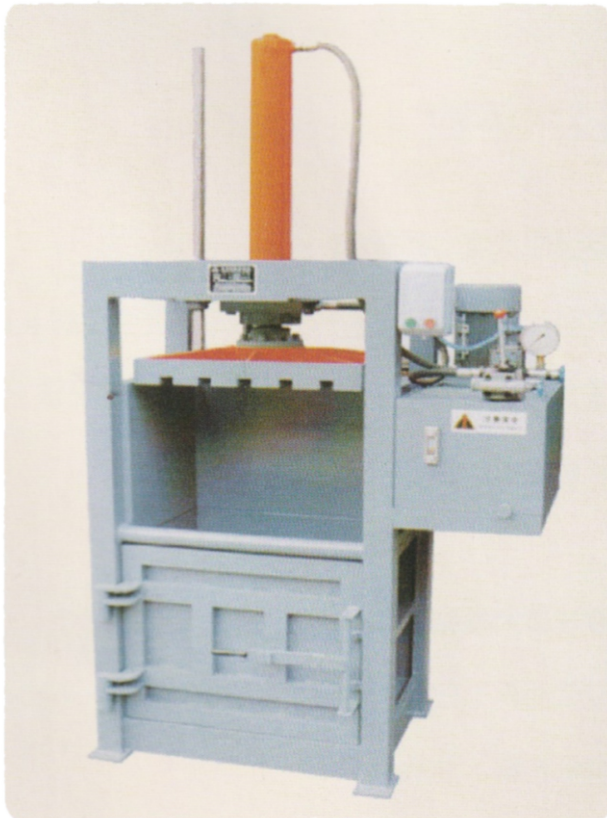
- High performance frequency control, so that energy saving and environmental protection
- High performance air operated clutch, low noise and long life
- High speed signal pickup coder so controlling is much easier
- Auto-photoelectricity protection system, make it more safety
- Multi pass air storage system, can control air consumption reasonably
- Auto-lubrication system..

	TY-25T	T-45T
Rated pressure	250 KN	450 KN
Punch Time	60-100 times / min	60-100 times / min
Stroke	200 mm	200 mm
Maximum die set height	490 mm	490 mm
Die set height adjustment	80 mm	80 mm
Work table size	1000 x 750 mm (LxW)	1100 x 870 mm (LxW)
Board hole size of work table	300 mm x 300 mm	300 mm x 300 mm
Thickness of work table	50 mm, 100 mm	50 mm, 100 mm
Machine Power	5.5w	8 Kw
Size	2650 x 1550 x 2650	2850 x 1750 x 2850

MOULD



The mould adopts, pneumatic sprint device : die long life, stable quality, high precision, superior design. Aluminium foil container processing from material cut, forming, stretching, curling forming a container shape complete.



Scrap Baler

Production Features

- Manual Feeding Mouth
- Vertical structure, safe and reliable
- Manual packing
- Manual and packing piece

Technical Data

- Maximum Pressure : 150 KN
- Pressure range 100 mm
- Block Size : 720 x 520 mm
- Machine Power : 4KW
- Net Weight : 900 kg
- Dimensions : 100 x 1200 x 2400 mm (L x W x H)

PIC	ITEM	DESCRIBE	WEIGHT(g)
	SSP-01	Top out:φ73*47mm Top in: φ62*45mm Capacity:110ml Bottom:φ48mm Thickness:0.05mm	2.3g
	SSP-02	Top out:75*75*30mm Top in: 65*65*28mm Capacity:100ml Bottom:54*54mm Thickness:0.05mm	2.2g
	SSP-03	Top out:φ123*25mm Top in:φ100*23mm Capacity:145ml Bottom:φ80mm Thickness:0.05mm	2.4g
	SSP-04	Top out:130*100*42mm Top in:115*85*35mm Capacity:230ml Bottom:95*65mm Thickness:0.05mm	4g
	SSP-05	Top out:150*120*46mm Top in:130*100*40mm Capacity:410ml Bottom:110*80mm Thickness:0.05mm	5g
	SSP-06	Top out:155*92*50mm Top in:145*82*44mm Capacity:430ml Bottom:125*62mm Thickness:0.065mm	6.6g
	SSP-07	Top out:160*160*40mm Top in:144*144*32mm Capacity :540ml Bottom:120*120mm Thickness:0.055mm	6.5g
	SSP-08	Top out:φ185*45mm Top in:φ165*38mm Capacity:720ml Bottom:φ142mm Thickness:0.07mm	9g
	SSP-09	Top out:192*124*26mm Top in:174*106*24mm Capacity:400ml Bottom:164*96mm Thickness:0.06mm	6g
	SSP-10	Top out:195*144*40mm Top in:176*125*31mm Capacity:600ml Bottom:153*102mm Thickness:0.07mm	8.7g
	SSP-11	Top out:196*126*53mm Top in:180*110*45mm Capacity:700ml Bottom:153*83mm Thickness:0.05mm	6.85g
	SSP-12	Top out:200*111*55mm Top in:182*93*47mm Capacity:650ml Bottom:160*69mm Thickness:0.07mm	9.5g
	SSP-13	Top out:φ200*22mm Top in:φ186*20mm Capacity:500ml Bottom:φ176mm Thickness:0.055mm	6.9g

PIC	ITEM	DESCRIBE	WEIGHT(g)
	SSP-14	Top out:204*116*41mm Top in:190*102*33mm Capacity:580ml Bottom:175*85mm Thickness:0.05mm	6g
	SSP-15	Top out:210*140*32mm Top in:191*121*30mm Capacity:600ml Bottom:179*109mm Thickness:0.06mm	8g
	SSP-16	Top out:213*143*43mm Top in:198*128*35mm Capacity:850ml Bottom:178*110mm Thickness:0.07mm	10g
	SSP-17	Top out:φ215*47mm Top in:φ198*40mm Capacity:1100ml Bottom:φ175mm Thickness:0.07mm	12g
	SSP-18	Top out:218*159*38mm Top in:201*142*30mm Capacity: 750ml Bottom:190*127mm Thickness:0.07mm	11.4g
	SSP-19	Top out:218*126*41mm Top in:204*110*33mm Capacity:680ml Bottom:185*95mm Thickness:0.055mm	7.2g
	SSP-20	Top out:220*115*60mm Top in:200*95*56mm Capacity:850ml Bottom:185*75mm Thickness:0.08mm	14g
	SSP-21	Top out:220*158*54mm Top in:203*140*45mm Capacity:1000ml Bottom:175*115mm Thickness:0.07mm	13g
	SSP-22	Top out:220*156*31mm Top in:205*140*28mm Capacity:840ml Bottom:190*128mm Thickness:0.07mm	12.3g
	SSP-23	Top out:227*179*39mm Top in:215*165*30mm Capacity:750ml Bottom:196*148mm Thickness:0.07mm	14g
	SSP-24	Top out:φ228*35mm Top in:φ207*33mm Capacity:960ml Bottom:φ166mm Thickness:0.07mm	11g
	SSP-25	Top out:230*177*35mm Top in:215*160*28mm Capacity:750ml Bottom:200*145mm Thickness:0.07mm	12g
	SSP-26	Top out:232*173*41mm Top in:213*154*35mm Capacity:1100ml Bottom:200*141mm Thickness:0.07mm	13g

PIC	ITEM	DESCRIBE	WEIGHT(g)
	SSP-27	Top out:φ232*72mm Top in:φ215*63mm Capacity:1900ml Bottom:φ185mm Thickness:0.07mm	17g
	SSP-28	Top out:φ232*52mm Top in:φ215*43mm Capacity:1400ml Bottom:φ192mm Thickness:0.07mm	15g
	SSP-29	Top out:250*143*54mm Top in:230*124*45mm Capacity:1100ml Bottom:205*105mm Thickness:0.08mm	16g
	SSP-30	Top out:250*170*35mm Top in:235*155*33mm Capacity:570ml Bottom:215*130mm Thickness:0.08mm	20g
	SSP-31	Top out:253*197*48mm Top in:236*180*40mm Capacity: 1458 ml Bottom:210*150mm Thickness:0.07mm	14g
	SSP-32	Top out:φ254*75mm Top in:φ238*72mm Capacity:2750ml Bottom:φ203mm Thickness:0.08mm	21g
	SSP-33	Top out:260*190*63mm Top in:242*172*53mm Capacity: 1906ml Bottom:218*148mm Thickness:0.07mm	18g
	SSP-34	Top out:φ295*14mm Top in:φ275*12mm Capacity:960ml Bottom:φ166mm Thickness:0.065mm	14.4g
	SSP-35	Top out:314*215*50mm Top in:292*192*47mm Capacity:2350ml Bottom:272*180mm Thickness:0.07mm	21g
	SSP-36	Top out:315*205*50mm Top in:295*185*42mm Capacity:2200ml Bottom:273*169mm Thickness:0.06mm	18.3g
	SSP-37	Top out:322*263*38mm Top in:296*232*33mm Capacity:2180ml Bottom:268*204mm Thickness:0.08mm	27g
	SSP-38	Top out:323*266*64mm Top in:297*240*59mm Capacity:3500ml Bottom:254*194mm Thickness:0.08mm	33g
	SSP-39	Top out:340*230*28mm Top in:327*217*26mm Bottom:315*205mm Thickness:0.08mm	20g

PIC	ITEM	DESCRIBE	WEIGHT(g)
	SSP-40	Top out:352*247*24mm Top in:334*229*20mm capacity:1000ml Bottom:255*150mm Thickness:0.110mm	26g
	SSP-41	Top out:395*340*55mm Top in:365*310*51mm Capacity:5350ml Bottom:340*290mm Thickness:0.10mm	56g
	SSP-42	Top out:426*286*29mm Top in:398*264*25mm capacity:1400 ml Bottom:316*180mm Thickness:0.12mm	42g
	SSP-43	Top out:445*355*80mm Top in:408*318*75mm Capacity:6600ml Bottom:350*265mm Thickness:0.10mm	68g
	SSP-44	Top out:450*330*31mm Top in:435*317*28mm Capacity:3500ml Bottom:415*300mm Thickness:0.13mm	71g
	SSP-45	Top out:458*337*65mm Top in:420*297*62mm Capacity:7000ml Bottom:395*273mm Thickness:0.115mm	79g
	SSP-46	Top out:468*340*85mm Top in:440*313*80mm Capacity:7200ml Bottom:380*265mm Thickness:0.12mm	69g
	SSP-47	Top out:528*328*86mm Top in:502*302*81mm Capacity:9700ml Bottom:430*232mm Thickness:0.15mm	117.5g
	SSP-48	Top out:534*336*15mm Bottom:528*330mm Thickness:0.09mm	48g
	SSP-49	Top out:550*362*30mm Top in:515*335*25mm capacity:3000ml Bottom:415*240mm Thickness:0.14mm	75g
	SSP-50	Top out:158*100*28mm Top in:147*89*25mm capacity:300ml Bottom:137*80mm Thickness:0.09mm	6.5g
	SSP-51	Top out:158*103*30mm Top in:146*90*29mm capacity:361ml Bottom:138*83mm Thickness:0.09mm	7.5g
	SSP-52	Top out:168*108*32mm Top in:158*94*31mm capacity:305ml Bottom:127*67mm Thickness:0.09mm	8g



HOUSE FOIL MACHINE



Plain winding - 6 mts / 9 mts long per roll. One of the most used and versatile materials in the home and restaurants.

Spooling is done by a machine that winds a pre - set measured length of foil on to paper board core.

Technical Specifications :

Aluminium foil rolls web width	300 mm Max
Parent Aluminium foil roll at unwind side	450 mm Max OD
Tension control at unwind (De-coller)	Manual
Thickness of Aluminium Foils	Min. 9-20 Micron Max
PLC Base 2 HP Motor with AC frequency drive.	

Factory Address
S S METAL PRODUCTS
75/18, Pilliyar Koil Street, Kachinakuppam
Ambattur, SIDCO Estate, CHENNAI-600098
SHIKHAR HARAN - MOB- 9840054143
EMAIL- shikhar.ssenterprises@gmail.com
GSTIN : 33ADMFS2215C1ZI
IEC :ADMFS2215C

Office Address
S S METAL PRODUCTS
38, Pilliyar Koil Street, Kachinakuppam
Ambattur SIDCO Estate, CHENNAI-600098
SHIKHAR HARAN MOB- 9840054143
EMAIL- shikhar.ssenterprises@gmail.com
GSTIN : 33ADMFS2215C1ZI
IEC :ADMFS2215C

Customer support - ssmetalproducts123@gmail.com / sathish.ssenterprises@gmail.com